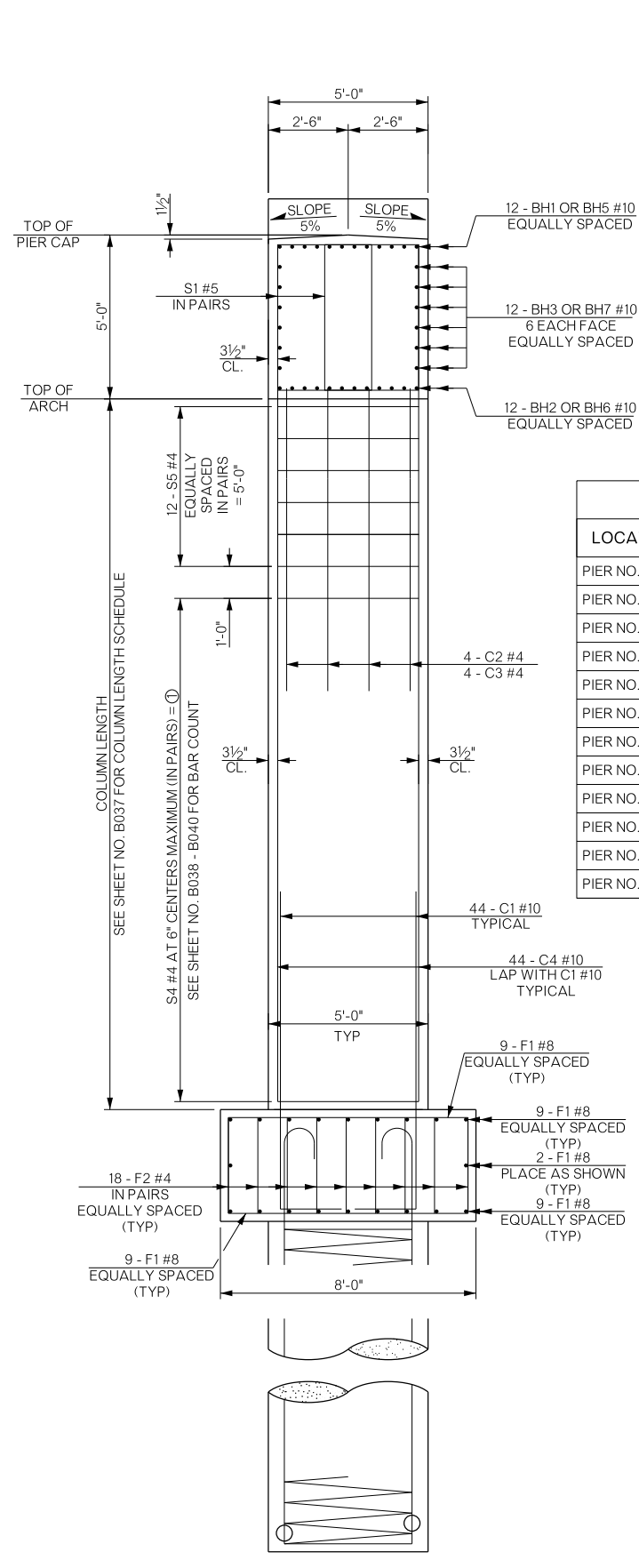
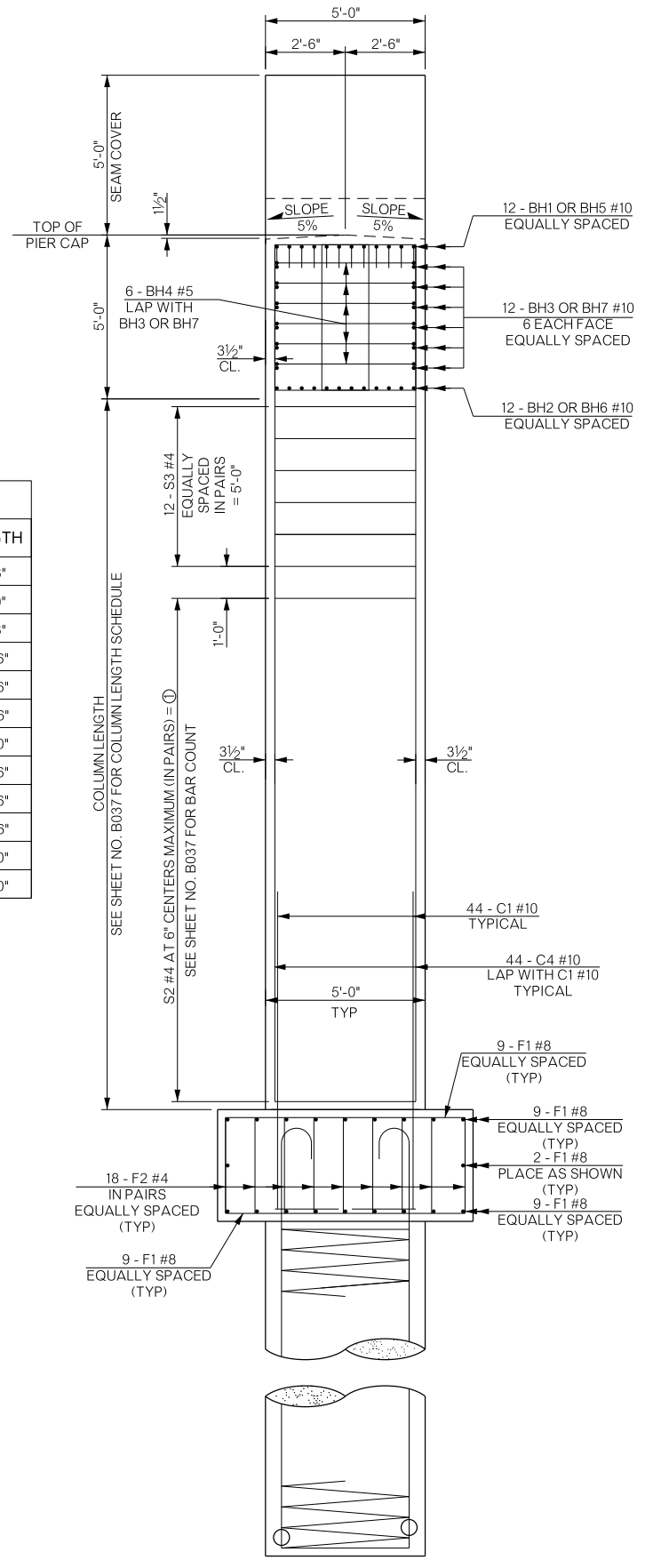


REVISIONS		
REV. NO.	DESCRIPTION	DATE

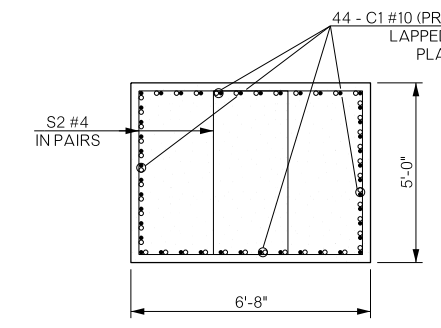


TYPICAL SECTION THRU PIER AT ARCH

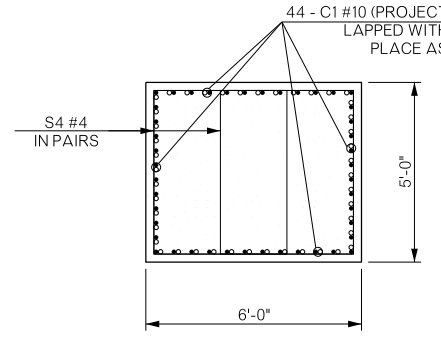
LOCATION	LENGTH
PIER NO. 3	2'-6"
PIER NO. 4	5'-0"
PIER NO. 5	7'-6"
PIER NO. 6	10'-6"
PIER NO. 7	12'-6"
PIER NO. 8	14'-6"
PIER NO. 9	16'-0"
PIER NO. 10	17'-6"
PIER NO. 11	17'-6"
PIER NO. 12	14'-6"
PIER NO. 15	16'-0"
PIER NO. 16	16'-0"



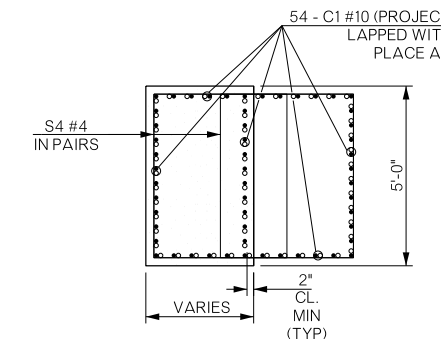
END SECTION



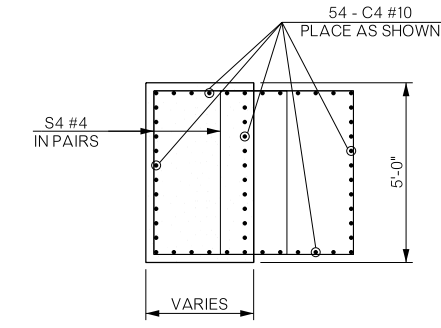
SECTION A-A



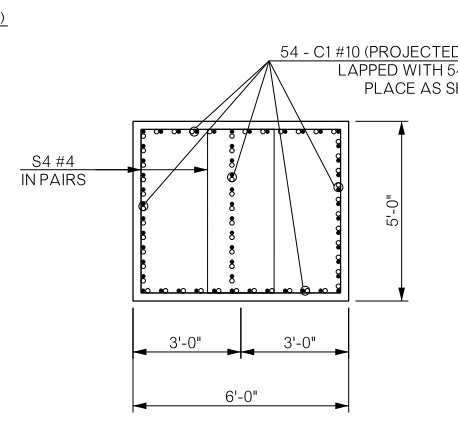
SECTION B-B



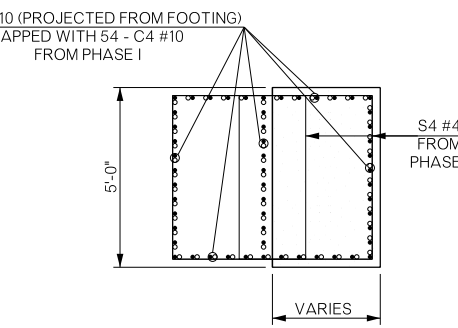
SECTION C-C
PIERS NO. 3, 4, AND 5
C2 #4 NOT SHOWN



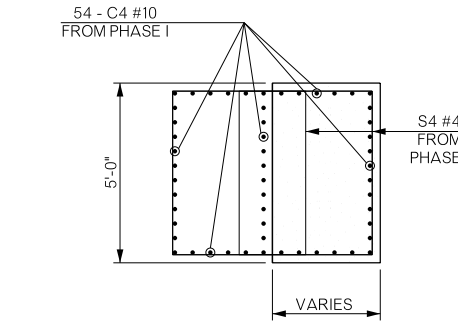
SECTION C-C
PIERS NO. 6 - 12, 15, AND 16
C2 #4 NOT SHOWN



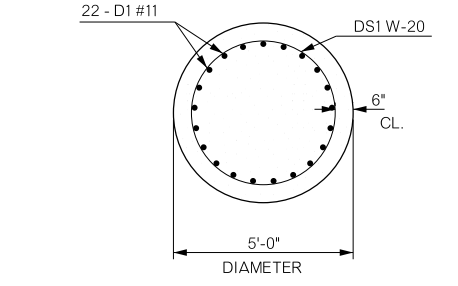
SECTION D-D



SECTION E-E
PIERS NO. 3, 4, AND 5
C2 #4 NOT SHOWN



SECTION E-E
PIERS NO. 3, 4, AND 5
C2 #4 NOT SHOWN



SECTION F-F

BRIDGE "A" SH-33 OVER COTTONWOOD CREEK	LOGAN COUNTY	Design	GT	11/15
DETAILS OF PIERS NO. 3 - 12, 15, 16 (SHEET 3 OF 7)		Detail	TIS	2/16
		Check		
STATE OF OKLAHOMA		DEPARTMENT OF TRANSPORTATION		Sheet No. B036
JOB/PIECE NO. 21860(04)		Engr: HERNANDEZ		